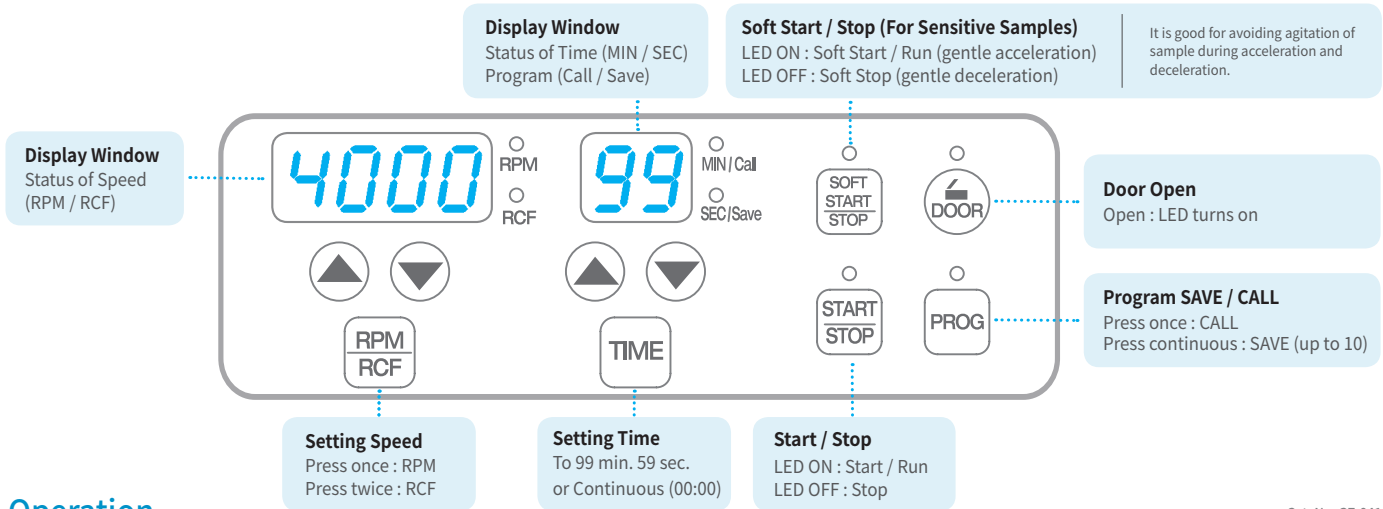


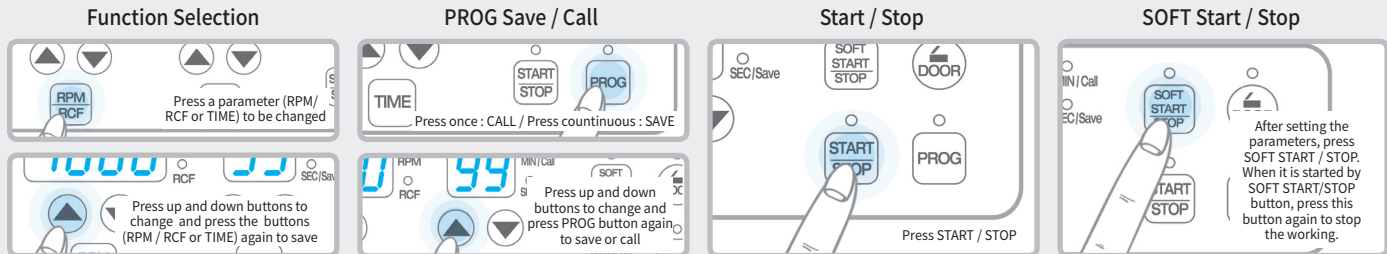


Display & Control Panel



Operation

Cat. No. GZ-0416



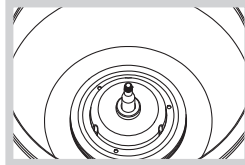


Precautions for Use



Motor holding cushion

Remove a motor fixing cushion (polyethylene (PE) foam) from the chamber of centrifuge before installation. The cushion is to prevent possible damages caused by motor shaking during shipping or relocation.



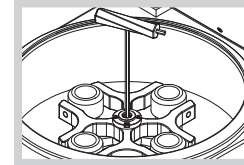
Chamber cleaning & checking

Clean the motor shaft. Remove the foreign substances not to cause any vibration.



Checking accessories for damage

Inspect the rotor and accessories for damage before each use. Discontinue use and replace it if damaged.



Rotor checking

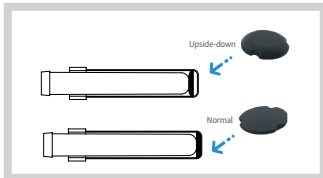
Check the rotor is installed correctly and is sitting firmly on the motor shaft.



Balancing the rotor

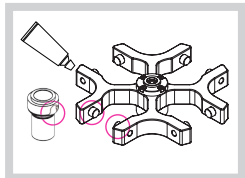
Load the sample symmetrically.

Maintenance Tips



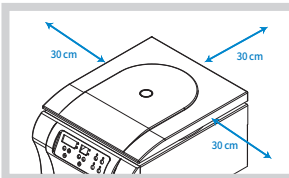
Cushion rubber of rotor sleeve

After washing or autoclaving, a cushion rubber at the bottom of rotor sleeve (GLB-15A-FA) may fall out of the sleeve and it can cause imbalance. Also, the rubber has a correct direction. The upside-down rubber cause poorly fitted tube from the sleeve. Check the rubber in the sleeve and the direction of the rubber.



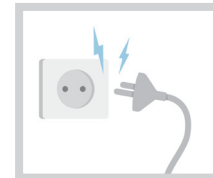
Lubricate the contact area

Clean rotor pivots and bucket grooves. Lubricate them by coating the grease sometimes to swing the buckets enough.



Secure a safety zone or 30 cm around centrifuge

Position the centrifuge with enough space (30 cm) on each side of centrifuge to ensure proper air circulation. Neither hazardous materials nor persons should be permitted within the area during operation.



Electrical safety

Use the power cord supplied with the device and connect the device to the power supplies that match the electrical requirements. Switch off the device and disconnect the power plug after using the centrifuge.

GRS-S-100-4 for
GLB-b100-100 / GLB-b50-100 /
GLB-10-8-100 / GLB-bd15-100 /
GLB-bdc15-100

GRS-S-50-4 for GLB-50-50 /
GLB-c50-50 / GLB-15-50/
GLB-c15-50 / GLB-d15-50 /
GLB-dc15-50

GRS-S-15-6 for GLB-15-15

GRA-S-15-16A incl.
GLB-15A-FA

GRS-S-mw-2

Interchangeable rotors