

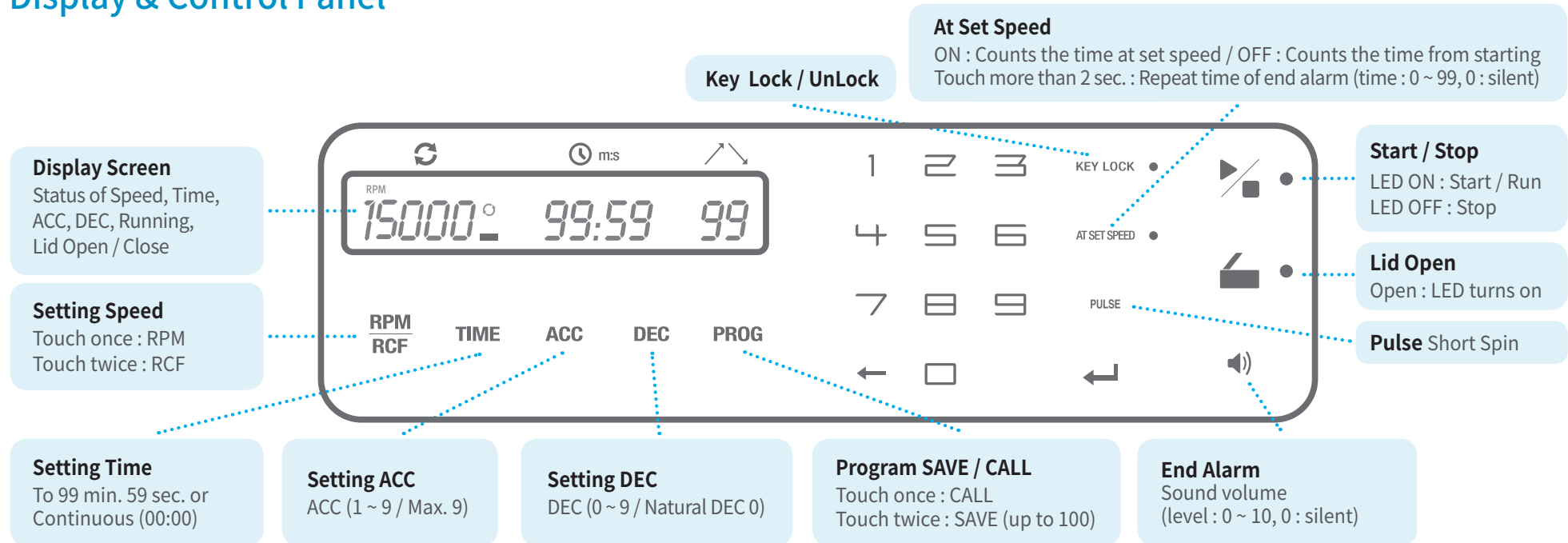


1580



1248

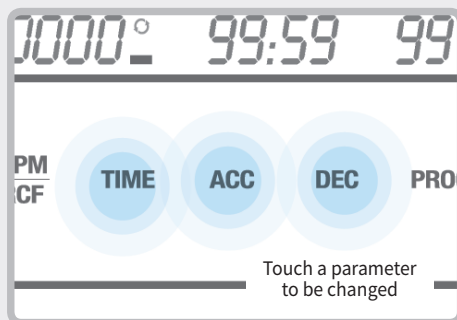
Display & Control Panel



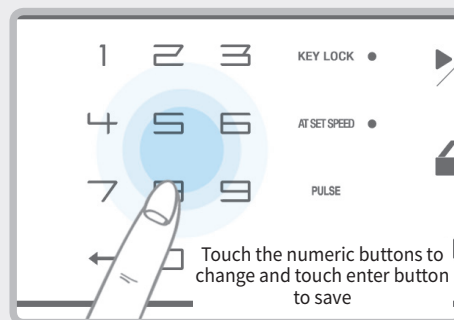
Operation

Cat. No. GZ-1580 Cat. No. GZ-1248

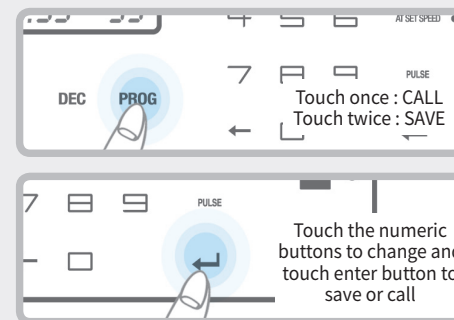
Function Selection



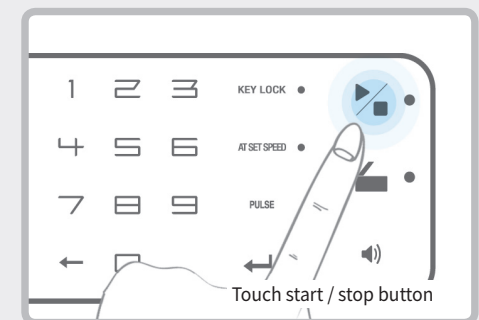
Parameter Change



PROG Save / Call



Start / Stop



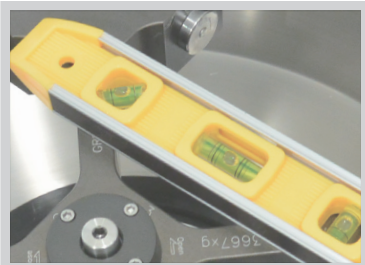


1580



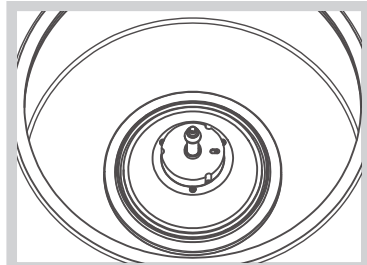
1248

Precautions for Use



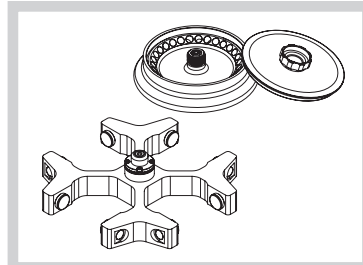
Balance for centrifuge & rotor

When centrifuge is installed, check the horizontality by a Bubble Leveler.



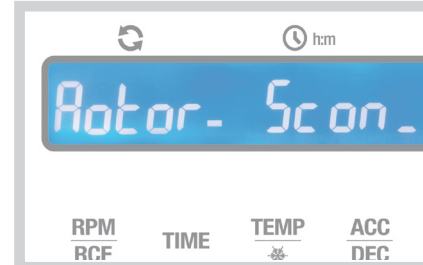
Chamber cleaning & checking

Clean the motor shaft. Remove the foreign substances not to cause any vibration.



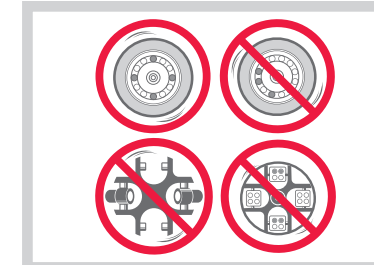
Checking accessories for damage

Inspect the rotor and accessories for damage before each use. Discontinue use and replace it if damaged.



Automatic rotor identification

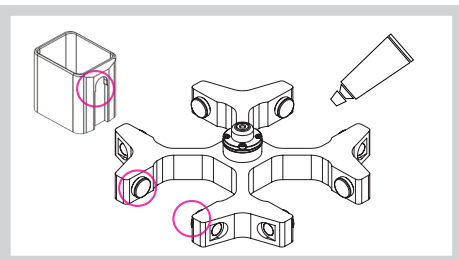
If a rotor is absent and power is supplied, "Rotor Scan" → "Error 9" will be appeared. This message will be cleared after rotor coupling and lid closing.



Balancing the rotor

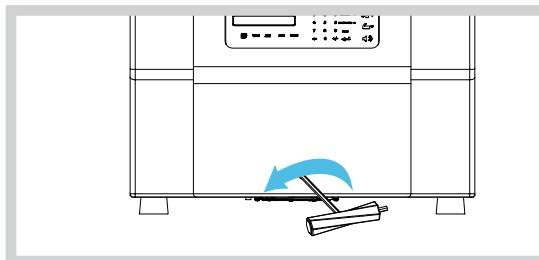
Load the sample symmetrically.

Maintenance Tips



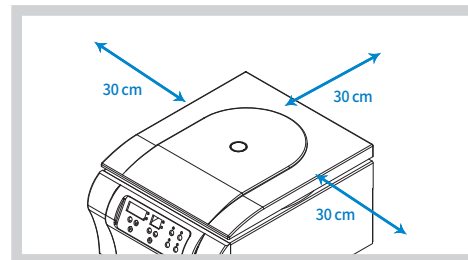
Lubricate the contact area

Clean rotor pivots and bucket grooves. Lubricate them by coating the grease sometimes to swing the buckets enough.



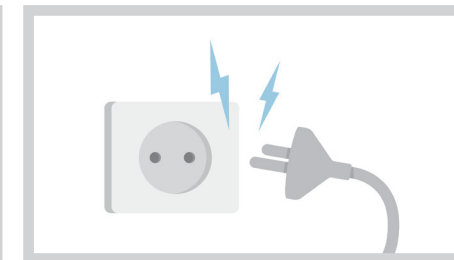
Emergency lid open

If the centrifuge lid won't open, insert the emergency lid open tool into the hole and turn it counter clockwise. (Before manual opening, switch off the device and wait until spinning is completely stopped.)



Secure a safety zone or 30 cm around centrifuge

Position the centrifuge with enough space (30 cm) on each side of centrifuge to ensure proper air circulation and safety zone.



Electrical safety

Use the power cord supplied with the device and connect the device to the power supplies that match the electrical requirements. Switch off the device and disconnect the power plug after using the centrifuge.